



WICKER PARK BUCKTOWN

SPECIAL SERVICE AREA #33

2017

ANNUAL REPORT

Getting it done

The People Behind the Magic.

WPB SSA #33 Commission

Brent Norsman, Norsman Architects, Chair

Rebecca Dohe, Resident, Co-Chair

David Ginople, store B vintage, Secretary

Wayne Janik, Janik's Café, Treasurer

Joseph Hall, Quick Release Bicycles

Marcy Huttas, Resident

WPB Chamber of Commerce Board of Directors 2017

David Stearns, L&L Development, President

Mike Cho, Anova Properties, Vice President

Andrew Balderson, Balderson & Company, Treasurer

Joseph C. Spataro, Waddell & Reed, Secretary

Michelle Gomez, MGO Fashion, Director

Robert Gomez, Subterranean, Director

Maren Rosenberg, Escape Artistry, Director

Ryan Martin, The Den Theater, Director

David Boylan, SERV PRO, Director

Robert Kelly, University of Aesthetics & Cosmetology, Director

Ann Nolan, Ann Nolan State Farm Insurance, Director

Michael Taus, Taus Authentic, Director

Albert Spenadel, Spenadel Tax + Accounting, Director

WPB Chamber of Commerce | Staff

Pamela Maass, Executive Director

Samantha Choudhury, SSA #33 Program Manager

Hans Kumler, SSA #33 Program Specialist

Gabriela Perez, Membership & Marketing Coordinator

Debbie Rinella, Special Events Coordinator

Mark Friedman, Accountant

Alice Howe, Farmer's Market Manager

Jordan Miller, Arts + Social Media Administrator

Cover Mural: Ava's Italian Ice, 814 N. Western Ave.

Annual Report Designed by Teska Associates, Inc.

WPB SSA #33 Quick Facts

Q: What is a Special Service Area?

A Special Service Area, i.e. a SSA, is an economic development tool used to make neighborhoods their best-and-brightest self.

Q: How does it work?

A supplemental property tax levy is applied to properties within the SSA district; the funds collected are used for beautification and enhancements therein. From street cleaning and snow removal to art installations, transportation improvements and holiday decor – WPB SSA #33 is committed to serving up the everyday essentials, must-needed fundamentals and creative space enhancements that are uniquely WPB. By providing these services year after year, our SSA fosters a vibrant, inviting and safe community for all.

Q: What informs SSA actions?

Annual improvements are guided by our 2016 award-winning Master Plan, directed by citizen volunteers, and administered by the Wicker Park Bucktown Chamber of Commerce. In 2016 we undertook an inspiring update to our 2009 Master Plan, highlights of which included innovative renderings and recommendations that will continue to guide our efforts for the next 5-7 years. Some of the major projects we are pursuing from the Master Plan are highlighted on the pages that follow!

www.wickerparkbucktown.com
(773) 384-2672

Meet the Commissioners

Our Fearless Leaders.

WPB. It's our name and the name of the community we serve. It is where we live and what we live for. We help make this hood happen. WPB works when we grease the gears of commerce. It flourishes when we promote its arts. It stays beautiful because we keep it clean. Our culture thrives with our celebration of it. We are the forum to hear its voice. We are the volunteers who serve it. More importantly, we are it.



Brent Norsman

Guide Development +
Transportation Committee Chair

Keep an eye out around WPB for our commissioner and urban surfer Brent, whose favorite method of transportation is a longboard.



Joseph Hall

Transportation
Committee Co-Chair

Joe, WPB's longest serving commissioner, started riding a bicycle as an adult while he was a Peace Corps volunteer in West Africa.



Rebecca Doherty

Promote
Committee Chair

Rebecca qualified for and is running the 2018 Boston Marathon. She is also a proud Bucktown resident and commercial property owner!



David Ginople

Arts
Committee Chair

David was a former hair model, buyer for Marshall Fields and Bergdorf Goodman, and has been an independent retail store owner since 1985.



Wayne Janik

Clean + Green
Committee Chair

Apart from running a café, looking after the snow, and cleaning / greening WPB, Wayne enjoys hiking, backpacking, and mountain biking.



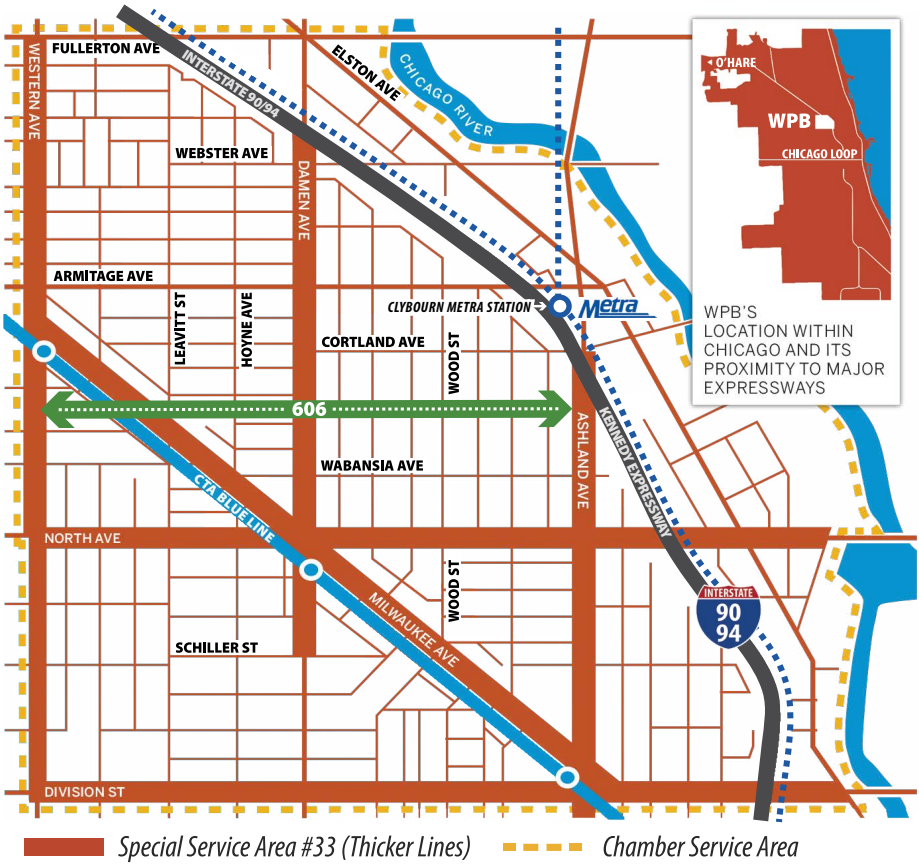
Marcy Huttas

Guide Development
Committee Co-Chair

Talk about coming full-circle... Marcy toured WPB's Ludwig Drum Factory when she was 12 as part of summer percussion camp. This is now Willow Square Lofts, the condo within the SSA where she lives.

About

Our Focus and Motivation.



Special Service Area #33 (Thicker Lines) **Chamber Service Area**

Who we serve

The streets highlighted by thicker orange lines in the map above comprise WPB SSA #33. Our SSA is directed by a commission of awesome volunteers, organized by the five committees noted below. You'll get to know our committees and their 2017 projects a lot better on the pages that follow.

Committees

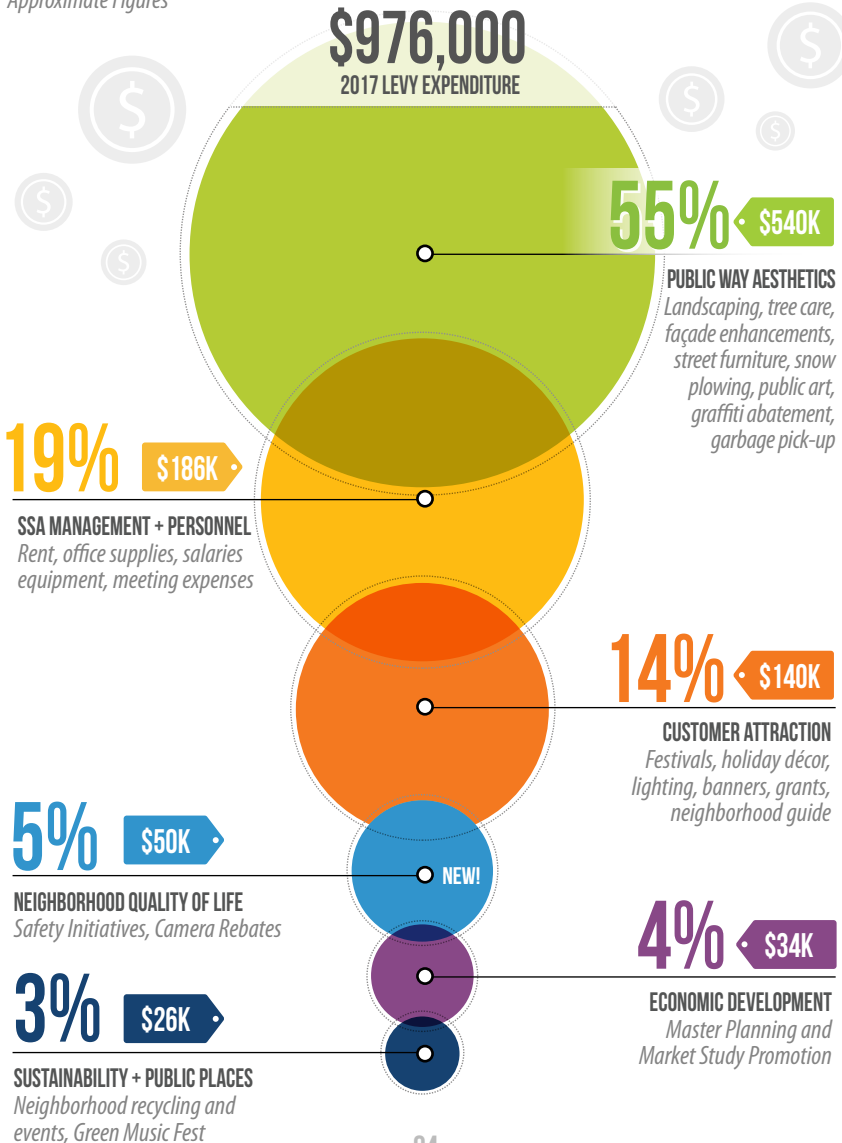
				
GUIDE DEVELOPMENT	ARTS	CLEAN AND GREEN	TRANSPORTATION	PROMOTE

Dollars + Cents

Where does the dough go?

Our budget is driven by our mission and award-winning Master Plan. In 2017 we applied \$976,000 in funds across our neighborhoods, as showcased in the infographic below and initiated a brand new spending category entitled 'Neighborhood Quality of Life' to further community cohesion and safety initiatives. Over time, budget categories have shifted; for a detailed look at spending categories from years past, please visit: www.wickerparkbucktown.com

* Approximate Figures



Guide Development

Keywords: Shape, Impact, Lead, Support

Our Guide Development Committee helps manage change by embracing a proactive role in shaping WPB's unfolding future. In spring of 2016 we updated our Master Plan, which renewed our energy and determination to keep Wicker Park Bucktown the best of the best. In addition to serving up over \$17,000 in annual facade improvement rebates, in 2017 our Guide Development Committee created a neighborhood safety program! Safety rebates may be applied towards the installation of exterior lighting, security cameras, anti-smash window film and more! See information and additional details below.

Eligible Safety + Facade Rebate Categories

 EXTERIOR SECURITY CAMERAS	 ANTI-GRAFFITI + ANTI-SMASH WINDOW FILM	 IMPROVEMENTS TO VACANT OR RESIDENTIAL BUILDINGS
 WINDOW / DOOR REPAIR + REPLACEMENT	 EXTERIOR LIGHTING	 POWER WASHING AND SAND BLASTING

Safety Rebates

WPB SSA #33 is committed to continually improving quality-of-life. In 2017, businesses and building owners in SSA #33 are eligible to apply for rebates for installing exterior security cameras, exterior lighting, repairing broken windows, and installing anti-smash / anti-graffiti film. WPB will reimburse 50% of the cost of one or more of these safety measures, to a maximum of \$1,000 per measure annually, per location. Additionally, WPB will reimburse 75% of the cost of hiring private security services, to a maximum of \$5,000 annually, per location.

Facade Rebates

In an effort to improve our streetscape, over \$17,000 in rebates for façade improvements were distributed throughout the district. Eligible properties can receive up to \$5,000 in matching funds for façade enhancements.

▶ [Visit wickerparkbucktown.com](http://wickerparkbucktown.com) to learn more!

2017 REBATES

Windfree Solar Company
1440 N. Ashland Avenue

Vinny D's
1709 W. Division Street

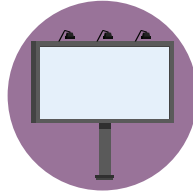
North Ave Condo Association
1841 W. North Avenue

Hero Coffee
1900 W. North Avenue

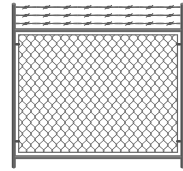
\$17,450



HISTORIC PRESERVATION



BILLBOARD REMOVAL



REMOVAL OF SECURITY GATES + FENCES



TUCKPOINT AND MASONRY



FACADE RENOVATIONS



HISTORIC SIGN RESTORATION

WPB SSA Mission Statement

To sustain and promote the prosperity and unique qualities of life in Wicker Park Bucktown, while preserving its diverse character for the benefit of its residents, visitors, and businesses to enhance our public ways. It is a partnership between the City of Chicago, SSA taxpayers, the Wicker Park Bucktown Chamber of Commerce and community members.

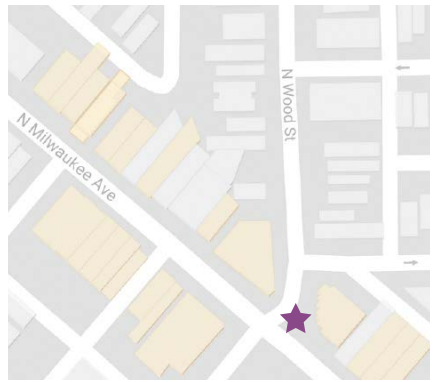
Arts

Keywords: *Create, Innovate, Interact, Infuse*

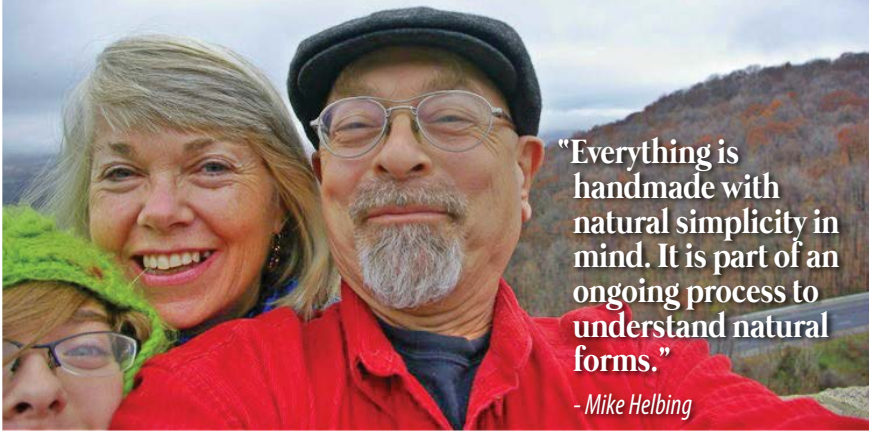
The Arts Committee strives to keep local arts and culture alive and well, and year after year our creative pulse remains audibly strong. Our community is known for being vibrant and fun to explore, peaking curiosities of visitors and residents alike via murals, installations, festivals and the overall spirit of, "you never know what you'll find in WPB". Through arts initiatives led by the Arts Committee and the annual Community Grants Program, WPB SSA #33 awards funds to local artists and organizations to enhance quality-of-life, and foster community growth and development within the neighborhood.

★ **Sculpture: One Big Thing** **Artist: Lynn Basa**

The intersection of Milwaukee Avenue and Wood Street was redesigned in 2014 to create a safer environment and develop a location for future public artwork. We are now, proud to announce the future is here! In Spring of 2017, a committee of Chicago art professionals selected Lynn Basa's proposal, "Worker Cottage" (see rendering below), to create a permanent installation at this highly visible intersection in the heart of WPB.



Sculpture: The Wicker Tree | Artist: Mike Helbing



“Everything is handmade with natural simplicity in mind. It is part of an ongoing process to understand natural forms.”

- Mike Helbing

The Wicker Tree, Installation Summer of 2018: *The Wicker Tree is a kinetic, stainless steel public art installation that will be located in Wicker Park, at the western edge of the playground. The sculpture includes a whimsical crown of moving stainless steel ribbons and wire rope, reminiscent of weeping willow leaves. During the winter LED lights can be focused on the tree to celebrate the movement and give it a seasonal festive look.*

Artist, Mike Helbing is a member of the Chicago Sculpture International. He has many years experience in public art installations, including his work as the Production Manager for Richard Hunt. One of the themes underlying Michael's work is a personal understanding of the human place in the natural order of things. Mike currently lives in Berwyn, Illinois with his wife and two children.

THE WICKER TREE
WICKER PARK, WEST OF PLAYGROUND
COMING SOON

'The Wicker Tree' will resemble this smaller-scaled sculpture by Mike Helbing.



Clean and Green

Keywords: Sustainable, Resilient, Viable, Livable

Our Clean and Green Committee is dedicated to making WPB streetscapes cleaner, greener and ever more beautiful. Annually, we strive to become a more environmentally sound, ecologically sensitive community with on-the-ground solutions and practices. In 2017, our SSA removed over 17,000 bags of trash and recycled over 26,000+ lbs of paper and electronics; see stats listed on next page. Big thanks to Cleanslate, Christy Webber Landscaping, Moore Landscaping, and Bartlett Tree Experts for partnering with us to beautify our stomping grounds.

Building Social Equity | Cleanslate, a social enterprise of the Cara Program, provides paid transitional jobs, which have the dual purpose of invigorating our neighborhoods and providing a platform to help individuals build skills and secure lasting careers. Read about the positive influence Cleanslate had on Shavelle's life via the bio below.

Meet Shavelle of Cleanslate

Shavelle first heard of Cleanslate through a friend who was currently in the program. Seeing the change in him inspired Shavelle to enroll. That newfound sense of pride has motivated Shavelle. He takes his job to heart, saying it has not only changed the way he tries to keep his own neighborhood clean, but it has saved his life as well.

"If it weren't for Cleanslate, I'd probably still be on the streets or back in prison. I feel so welcome here, like I really have a chance to prove myself. Nobody's perfect, but I'm trying!"

CLEANSLATE

BY cara



FLEXING OUR GREEN THUMB

2017 STATS

816 TREE PITS MULCHED \$10K COST

DID YOU KNOW:

The SSA maintained over 800 tree pits in 2017. This includes mulching, weeding, cleaning and general maintenance of tree pits.

54 TREE PITS GREENED \$8K COST

DID YOU KNOW:

The SSA greened over 50 tree pits in 2017. This includes care for plantings, pruning, dividing of plantings, and watering of tree pits.

52 NEW TREES PLANTED \$30K COST

DID YOU KNOW:

The average city tree removes between 13-48 lbs of carbon dioxide per year (American Forestry Association)!

830,260 \$30K COST
CUBIC FEET OF SNOW PLOWED

DID YOU KNOW:

Snow density can vary from 10 lbs to 30 lbs per cubic foot depending on whether it is fresh, dry snow or heavy, wet snow. This means WPB plowed between 4 and 12.5 tons of snow removed in 2017!

The Clean and Green Committee ensures the seasonal highs and lows of Chicago weather are well-planned for! From planting new trees and nourishing urban forestry, to repairing tree grates, cleaning streets and plowing plentiful inches of snowfall - our committee takes a proactive approach to planning for spring, summer, fall, and winter!



RECYCLE YOUR USED ELECTRONICS



13,000
RECEPTACLES SERVICED



17,000+
GARBAGE BAGS REMOVED

3,100+
RECYCLING BAGS PICKED-UP

2017
E-Recycling

1
Office Electronics
1,650 LBS

2
Computers
950 LBS

3
LCD TV/Monitors
460 LBS

4
Cell Phones
830 LBS

5
Misc.
380 LBS



22,000 LBS
PAPER RECYCLED



4,300 LBS
ELECTRONICS RECYCLED



Transportation

Keywords: Access, Safety, Flow, Mobility

The Transportation Committee is dedicated to keeping movement around our communities safe, simple and intuitive. Whether you're a pedestrian, cyclist or driver, we are actively planning for you! We continue to enhance our multi-modal environment by implementing complete streets initiatives, supporting a bike-friendly atmosphere via Bike-To-Work Week and installing new bike racks, and further beautifying and protecting our pedestrians by installing large planters at key locations within the streetscape and along corridors.

Did you know:

Milwaukee Avenue is used by thousands of pedestrians, 13,000+ motor vehicles and 5,000+ cyclists daily! - CDOT



Intersection of Milwaukee / North / Damen Avenues

Milwaukee Avenue Pilot Project

WPB SSA #33 strives to improve the pedestrian and cyclist experience in our neighborhoods by supporting complete streets initiatives (see next page). In summer 2017, we worked with the Chicago Dept. of Transportation (CDOT) on targeted improvements along Milwaukee Avenue. Bike boxes, curb bumpouts, and two slip lane closures (Damen/Milwaukee & Ashland/Milwaukee) were installed all along Milwaukee! Two new crosswalks at Milwaukee/North/Damen are also scheduled to be installed in 2018.



WPB RIDES

Newly installed bike corral outside of Parlor Pizza on Marion Court and Division Street.




5 SHINY ORANGE BIKE CORRALS


\$9K COST


DID YOU KNOW:


On-street bike corrals provide parking for 10 or more bicycles in the same space typically occupied by one car?! True story. Corrals also improve the walking environment by removing bikes from the sidewalk.


Making the case for complete streets:


- 

Wide, attractive sidewalks and well-defined bike routes, where appropriate to community context, encourage healthy, active lifestyles among residents of all ages.
- 

Complete streets can provide children with opportunities to reach nearby destinations in a safe and supportive environment.
- 

A variety of transportation options allow everyone – particularly people with disabilities and older adults – to get out and stay connected to the community.
- 

Multi-modal transportation networks help communities provide alternatives to sitting in traffic.
- 

Designing a street with sidewalks, better bus stop placement, traffic-calming measures, and ADA treatments may reduce pedestrian risk by as much as 28 percent.
- 

*A livable community is one that preserves resources for the next generation: Complete Streets help reduce carbon emissions and are an important part of a climate change strategy.**

* Source: National Complete Streets Coalition / Smart Growth America



Wide sidewalks on Division Street enhance mobility.

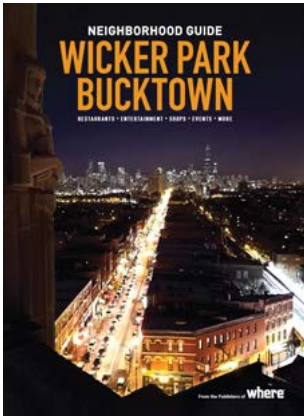
What are Complete Streets?

The City of Chicago is committed to building Complete Streets to ensure that everyone – pedestrians, transit users, bicyclists and motorists – can travel safely and comfortably along and across a street. Complete Streets give Chicagoans of all ages and abilities safer, cheaper, and healthier travel options. They support economic development and can incorporate environmental services and placemaking, which helps to create sustainable infrastructure and communities. The Chicago Department of Transportation (CDOT) is working to bring these benefits to your community. - Chicago Complete Streets

Promote

Keywords: Celebrate, Motivate, Buzz, Inspire

The Promote Committee works to generate buzz, intrigue, and excitement about Wicker Park Bucktown - it's people, businesses, and organizations. From working with the Silverman Group to lead public relations and get the word out about events, festivals, and neighborhood programs -- to partnering with 'Where Magazine' to produce WPB's annual neighborhood guide, the promote committee supports and furthers WPB activities and awareness.



◀ *From local culinary hits to must-see attractions and shopping destinations, the Where Neighborhood Guide helps attract visitors and boost our business sales.*

Wicker Park Fest



WICKER PARK FEST 2017

WPB Community Grant Program

The community grant program fosters the creative and independent spirit of WPB! By supporting small, unique events and activities we are able to give our community that extra push that keeps people coming back again and again. Some of the activities we helped sponsor in 2017, include Do Division Fest, holiday lights at the Polish Triangle, Collaboration, Bucktown Garden Walk, and Green Music Fest!

▶ *Visit wickerparkbucktown.com to learn about eligible activities and to download an application.*

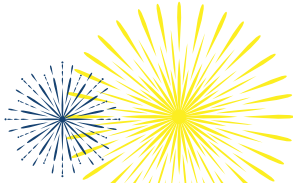


Photo Source: Alderman Scott Waguespack



Collaboration Season of Programming



Holiday Lights at the Polish Triangle

Photo Source: Bucktown Garden Walk



Bucktown Tree and Garden Walk



Green Music Fest



**Wicker Park Bucktown
Chamber of Commerce + SSA #33
1414 N Ashland Avenue
Chicago IL 60622**